

SPEC SHEET + MEASUREMENTS



Eddie Bauer® Women's Sport Hooded Full-Zip Fleece Jacket. EB245

Product photo



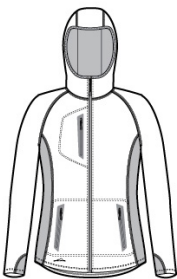
This sporty midweight jacket pairs smooth-faced fleece with stretch side panels for comfort during active adventures.

- 7.7-ounce, 100% polyester diamond doobby fleece with
- 88/12 poly/spandex side panels
- Three-panel hood with contrast lining
- Reverse coil zippers
- Welded contrast zippered pockets
- Contrast heat transfer Eddie Bauer logo on right hem

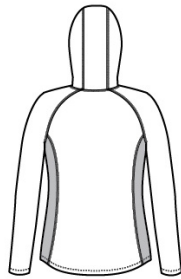
CARE INSTRUCTIONS

Machine wash cold with like colors, only non-chlorine bleach when needed, tumble dry low, warm iron if necessary.

Sketches



front



back

SPEC SHEET + MEASUREMENTS



Eddie Bauer® Women's Sport Hooded Full-Zip Fleece Jacket. EB245

PRODUCT MEASUREMENTS

	XS	S	M	L	XL	2XL	3XL	4XL
Size	2	4/6	8/10	12/14	16/18	20/22	24/26	28/30
Bust	17 1/4	18 1/4	19 1/4	20 3/4	22 1/4	23 3/4	25 3/4	27 3/4
Body Length at Front	27	27 1/2	28	28 1/2	29	29 1/2	30	30 1/2
Sleeve Length	31 1/2	32	32 1/2	33 1/8	33 3/4	34 3/8	34 3/4	35 1/8

Bust: Measured across the chest one inch below armhole when laid flat.

Body Length at Front: Measure from high point shoulder to lowest point of hem at front.

Sleeve Length: Start at center of neck and measure down shoulder, down sleeve to hem.

SIZE CHARTS

	XS	S	M	L	XL	2XL	3XL	4XL
Size	2	4/6	8/10	12/14	16/18	20/22	24/26	28/30
Bust	32-33	34-35	36-37	38-40	41-43	44-46	47-49	50-52

SPEC SHEET + MEASUREMENTS



Eddie Bauer® Women's Sport Hooded Full-Zip Fleece Jacket. EB245

HOW TO MEASURE



BUST

Measure under the arm and around the fullest part of the bust with arms down, keeping tape horizontal.