

SPEC SHEET + MEASUREMENTS



The North Face® Ascendent Insulated Jacket.

NF0A3SES

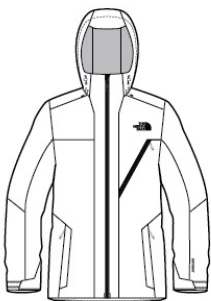
Product photo



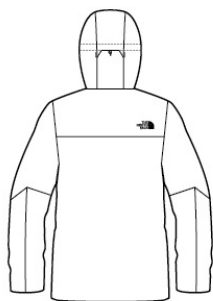
Stay warm, dry and carefree on the slopes or in the city in this waterproof, insulated jacket that's built with storm-shedding DryVent™ and Heatseeker™ technical fabrics.

- Shell: 75D 133g/m2 DryVent™ 2.0L—100% recycled polyester
- Insulation: 100 g (body), 80 g (sleeves), 60 g (collar) Heatseeker™ synthetic insulation
- Technical, weatherproof jacket with a classic cut
- Waterproof, breathable DryVent™ shell
- Heatseeker™ synthetic insulation provides additional warmth
- Partially constructed from recycled fabrications
- AquaGuard® waterproof zippers
- Interior stash pocket
- Secure-zip left chest pocket
- Adjustable Velcro® tab cuffs
- Hem cinch-cord
- Contains at least 50% recycled content by weight
- Contrast, raised, high-definition The North Face logo at left chest and right back shoulder

Sketches



front



back

BENEFITS

WATERPROOF: Impenetrable moisture barrier to guarantee dryness.

BREATHABLE: Mid-weight fabrics that help regulate body temperature.

INSULATED: Insulation traps hot air for reduced heat loss and increased warmth.

SYNTHETIC: Designed to replicate the qualities of down, but retain them even when wet.

SPEC SHEET + MEASUREMENTS



The North Face® Ascendent Insulated Jacket.

NF0A3SES

WIND PROTECTION: Limiting air penetration reduces the wind chill factor.

PRODUCT MEASUREMENTS

| | S | M | L | XL | 2XL | 3XL |
|----------------------|----|--------|--------|----|--------|--------|
| Body Length at Front | 31 | 31 1/2 | 32 1/4 | 33 | 33 3/4 | 34 1/2 |
| Chest | 22 | 23 1/2 | 25 | 27 | 29 | 31 |
| Sleeve Length | 36 | 36 1/2 | 37 1/4 | 38 | 38 3/4 | 39 1/2 |

Body Length at Front: Measure from high point shoulder to lowest point of hem at front.

Chest: Measured across the chest one inch below armhole when laid flat.

Sleeve Length: Start at center of neck and measure down shoulder, down sleeve to hem.

SIZE CHARTS

| | S | M | L | XL | 2XL | 3XL |
|-------|-------|-------|-------|-------|-------|-------|
| Chest | 36-38 | 39-41 | 42-44 | 45-48 | 49-52 | 53-56 |

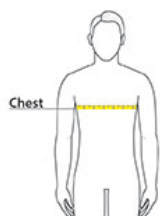
SPEC SHEET + MEASUREMENTS



The North Face[®] Ascendent Insulated Jacket.

NF0A3SES

HOW TO MEASURE



CHEST

Measure under the arm and around the fullest part of the chest with arms down, keeping tape horizontal.