

# SPEC SHEET + MEASUREMENTS



## The North Face® Ladies City Trench. NF0A529O

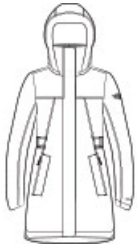
### Product photo



Designed to transition between polished looks and casual style, this trench is the waterproof, seam-sealed and windproof answer to your daily commute. A recycled polyester lining helps reduce environmental impact.

- Shell: 75D 116 g/m2 DryVent™—100% polyester; durable water-repellent (DWR) finish and lining
- Lining: 50D 116g/m2 100% recycled polyester
- Technical, weatherproof, seam-sealed trench
- Waterproof, breathable DryVent™ shell
- 100% recycled polyester lining
- Partially constructed from recycled fabrications
- Storm flap with Velcro® closure covers front zipper
- Interior media pocket at right chest
- 3-piece hood
- Attached, stowable hood
- Zippered hand pockets
- Shaped open cuffs
- Contrast embroidered DryVent™ logo at left cuff
- Adjustable side tabs at waist, for a flattering fit
- Contrast embroidered The North Face logo on left sleeve and right back shoulder

### Sketches



front



back

**BENEFITS WATERPROOF:** Impenetrable moisture barrier to guarantee dryness. **WIND PROTECTION:** Limiting air penetration reduces the wind chill factor. **RECYCLED CONTENT:** Made from post-consumer, recycled content.

### CARE INSTRUCTIONS

Machine wash warm. Tumble dry medium.

# SPEC SHEET + MEASUREMENTS



## The North Face® Ladies City Trench. NF0A529O

### PRODUCT MEASUREMENTS

	S	M	L	XL	2XL
Size	4/6	8/10	12/14	16/18	20/22
Body Length at Back	33 3/8	34	34 3/4	35 1/2	36 1/4
Bust	19 3/4	21	22 1/2	24 1/4	26
Sleeve Length from Center Back	34	34 1/2	35	35 1/2	36

**Body Length at Back:** Measured from high point shoulder to finished hem at back.

**Bust:** Measured across the chest one inch below armhole when laid flat.

**Sleeve Length from Center Back:** Measure from Center Back neck to shoulder point to sleeve hem.

### SIZE CHARTS

	XS	S	M	L	XL	2XL	3XL
Size	2	4/6	8/10	12/14	16/18	20/22	24/26
Bust	33-35	36-38	39-41	42-44	45-48		

# SPEC SHEET + MEASUREMENTS



The North Face® Ladies City Trench. NF0A529O

## HOW TO MEASURE

---



### **BUST**

Measure under the arm and around the fullest part of the bust with arms down, keeping tape horizontal.