

# SPEC SHEET + MEASUREMENTS



## Nike Bomber Jacket. NKFQ4759

### Product photo



Keep your look clean and classic with this bomber that works just about anywhere.

- 5-ounce, 62/38 cotton/nylon
- Rib knit collar and cuffs
- Dyed-to-match zipper
- Snap-front pockets
- Contrast embroidered Swoosh logo on the left sleeve and woven label at the back

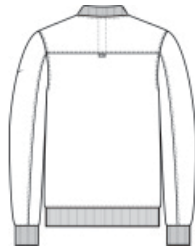
### CARE INSTRUCTIONS

Wash With Like Colors. Do Not Use Softeners. Remove Immediately. Do Not Allow To Lay On Itself When Wet. Fasten All Closures To Wash And Dry.

### Sketches



front



back

# SPEC SHEET + MEASUREMENTS



## Nike Bomber Jacket. NKFQ4759

### PRODUCT MEASUREMENTS

	XS	S	M	L	XL	2XL	3XL	4XL
Body Length at Back	26 3/8	26 3/4	27 1/8	27 7/8	28 3/4	29 1/2	30 1/4	31 1/8
Chest	20	21 5/8	23 1/4	24 3/4	26 1/2	28 3/4	30 7/8	32 5/8
Set in Sleeve Length	26 1/2	26 3/4	27	27 1/4	27 3/8	27 5/8	28	28 1/4

**Body Length at Back:** Measured from high point shoulder to finished hem at back.

**Chest:** Measured across the chest one inch below armhole when laid flat.

**Set in Sleeve Length:** Measure from Center Back neck to shoulder point to sleeve hem.

### SIZE CHARTS

	XS	S	M	L	XL	2XL	3XL	4XL
Chest	32-35	35-37 1/2	37 1/2-41	41-44	44-48 1/2	48 1/2 -53 1/2	53 1/2 - 58	58-63

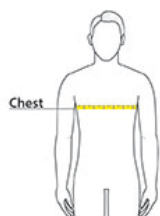
# SPEC SHEET + MEASUREMENTS



Nike Bomber Jacket. NKFQ4759

## HOW TO MEASURE

---



### CHEST

Measure under the arm and around the fullest part of the chest with arms down, keeping tape horizontal.

## COLORS

---



Black  
PMS BLACK  
C



Cool Grey  
PMS 424C



Midnight Navy  
PMS 2767C