

SPEC SHEET + MEASUREMENTS

RED HOUSE®

Red House® Slim Fit Nailhead Non-Iron Shirt. RH390

Product photo



For those who prefer a slim (but not tight) fit that sits closer to the body. Thoroughly updated, this crisp nailhead shirt has a silky feel and a wrinkle-resistant finish for exceptional non-iron performance. 4-ounce, 60/40 cotton/polyester with pucker-free taped seams, RH engraved buttons to elevate the office-ready look. Open collar with removeable stays. Mitered adjustable cuffs.

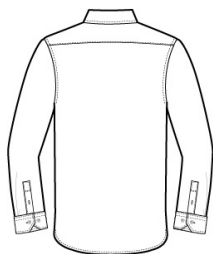
CARE INSTRUCTIONS

Machine wash cold with like colors, only non-chlorine bleach when needed, tumble dry low, warm iron if needed.

Sketches



front



back

SPEC SHEET + MEASUREMENTS

RED HOUSE

Red House® Slim Fit Nailhead Non-Iron Shirt. RH390

PRODUCT MEASUREMENTS

	XS	S	M	L	XL	2XL
Body Length at Front	29	30	31	32	33	34
Chest	19	20 1/2	22	23 1/2	25	26 1/2
Sleeve Length	33 3/4	34 1/2	35 1/4	36	36 3/4	37 1/2
Neck	17	17	17 1/2	18	19	19 1/4

Body Length at Front: Measure from high point shoulder to lowest point of hem at front.

Chest: Measured across the chest one inch below armhole when laid flat.

Sleeve Length: Start at center of neck and measure down shoulder, down sleeve to hem.

Neck: Measured from center of button to center of buttonhole.

SIZE CHARTS

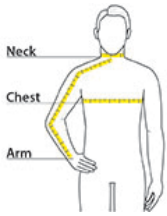
	XS	S	M	L	XL	2XL
Chest	32-34	35-37	38-40	41-43	44-46	47-49
Neck	14 1/2 - 15	15 - 15 1/2	15 1/2 - 16	16 - 16 1/2	16 1/2 - 17	17 - 17 1/2
Arm	30 1/2	32	34	35	36 1/2	37 1/2

SPEC SHEET + MEASUREMENTS

RED HOUSE®

Red House® Slim Fit Nailhead Non-Iron Shirt. RH390

HOW TO MEASURE



Neck Measure around the fullest part of the neck at the base.
Chest Width Measure under the arm and around the fullest part of the chest with arms down, keeping tape horizontal. **Arm** Place hand on hip. Start at the center of the back of the neck and measure across the shoulder, to the elbow, and then down to the wrist.

COLORS



Black
PMS BLACK
C



Blue Pearl
PMS 7451C



Mediterranean
Blue
PMS 7687C



Pink
PMS 517C



White