

# SPEC SHEET + MEASUREMENTS

RED HOUSE

Red House® Slim Fit Pinpoint Oxford Non-Iron Shirt.

RH620

## Product photo



For those who prefer a slim (but not tight) fit that sits closer to the body. Crafted from 3.8-ounce, 100% cotton, this elegant pinpoint oxford has a wrinkle-resistant finish so you always look your best—no iron required. Details like pucker-free taped seams, rounded adjustable cuffs, RH engraved buttons and a shirttail hem complement the sharp look. Open collar with removeable stays.

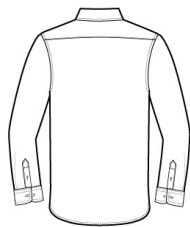
### CARE INSTRUCTIONS

Machine wash warm with like colors, only non-chlorine bleach if needed, tumble dry low, remove promptly & hang, warm iron if needed.

## Sketches



front



back

# SPEC SHEET + MEASUREMENTS

RED HOUSE

Red House® Slim Fit Pinpoint Oxford Non-Iron Shirt.  
RH620

## PRODUCT MEASUREMENTS

	XS	S	M	L	XL	2XL
Body Length at Front	29	30	31	32	33	34
Chest	19	20 1/2	22	23 1/2	25	26 1/2
Sleeve Length	33 3/4	34 1/2	35 1/4	36	36 3/4	37 1/2

**Body Length at Front:** Measure from high point shoulder to lowest point of hem at front.

**Chest:** Measured across the chest one inch below armhole when laid flat.

**Sleeve Length:** Start at center of neck and measure down shoulder, down sleeve to hem.

## SIZE CHARTS

	XS	S	M	L	XL	2XL
Chest	32-34	35-37	38-40	41-43	44-46	47-49
Neck	14 1/2 - 15	15 - 15 1/2	15 1/2 - 16	16 - 16 1/2	16 1/2 - 17	17 - 17 1/2
Arm	30 1/2	32	34	35	36 1/2	37 1/2

# SPEC SHEET + MEASUREMENTS

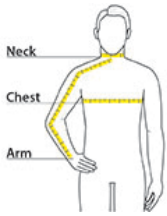
RED HOUSE

Red House® Slim Fit Pinpoint Oxford Non-Iron Shirt.

RH620

## HOW TO MEASURE

---



**Neck** Measure around the fullest part of the neck at the base.

**Chest Width** Measure under the arm and around the fullest part of the chest with arms down, keeping tape horizontal. **Arm** Place hand on hip. Start at the center of the back of the neck and measure across the shoulder, to the elbow, and then down to the wrist.

## COLORS

---



Blue  
PMS 2134C



Charcoal  
PMS COOL  
GREY 11C



Vintage Navy  
PMS 2374C



White