

# SPEC SHEET + MEASUREMENTS



## TravisMathew Newport Full-Zip Fleece. TM1MU420

### Product photo



Keep warm after nightfall anywhere life takes you. This ultra-soft fleece jacket is versatile enough to wear daily whether you're lounging on the couch, in the office or on a weekend escape.

- 8.9-ounce, 96/4 rayon/spandex
- Zip-through collar
- TravisMathew patch label at center back neck
- Reverse coil zipper
- Open hand pockets
- Open cuffs and hem

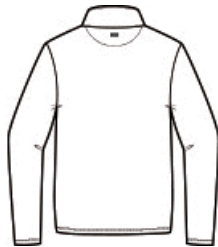
### CARE INSTRUCTIONS

Machine wash cold with like colors. Gentle cycle. Non chlorine bleach. Tumble dry low. Remove promptly. Cool iron if needed.

### Sketches



front



back

# SPEC SHEET + MEASUREMENTS



## TravisMathew Newport Full-Zip Fleece. TM1MU420

### PRODUCT MEASUREMENTS

	S	M	L	XL	2XL	3XL
Body Length at Back	28 1/2	29 1/2	30 1/2	31 1/2	32 1/2	33 1/2
Chest	20 1/4	21 3/4	23 1/4	24 3/4	26 1/4	27 3/4
Sleeve Length from Center Back	35 1/2	36	36 1/2	37	37 1/2	38

**Body Length at Back:** Measured from high point shoulder to finished hem at back.

**Chest:** Measured across the chest one inch below armhole when laid flat.

**Sleeve Length from Center Back:** Measure from Center Back neck to shoulder point to sleeve hem.

### SIZE CHARTS

	S	M	L	XL	2XL	3XL
Chest	35-37	38-40	42-44	45-47	48-50	52-54

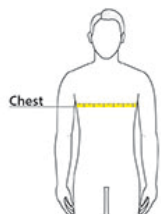
# SPEC SHEET + MEASUREMENTS



TravisMathew Newport Full-Zip Fleece. TM1MU420

## HOW TO MEASURE

---



### CHEST

Measure under the arm and around the fullest part of the chest with arms down, keeping tape horizontal.

## COLORS

---



Black  
PMS 426C



Blue Nights  
PMS 432C



Quiet Shade  
Grey  
PMS COOL  
GREY 10C